

Sennheiser USB Headset Integration

Last Modified on 01/18/2024 2:50 pm EST

Feature first available:

iPECS Cloud version 6.0.

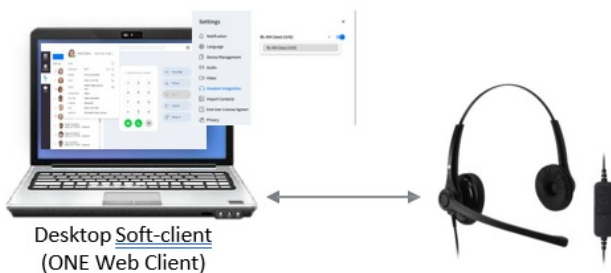
License Required:

iPECS Premium or Premium Plus users required

Description:

Sennheiser USB headsets (SC130 USB, SC260 USB, SDW 5064 DECT, and DW PRo 1 USB ML) are now compatible with iPECS ONE. This allows for user-friendly call answering and terminating using the headset.

- User friendly incoming call answering and terminating the call using Sennheiser(EPOS) USB headset



Supported Sennheiser(EPOS) USB headsets

- Sennheiser(EPOS) Headset : SC130 USB, SC260 USB, SDW 5064 Dect, DW Pro 1 USB ML

Supporting API integrated Call Control features

- **Off Hook / On Hook**

Programming:

Sennheiser USB headset integration

- User friendly incoming call answering and terminating the call using Sennheiser(EPOS) USB headset

Step 1: Install 'EPOS Connect' program in user's PC

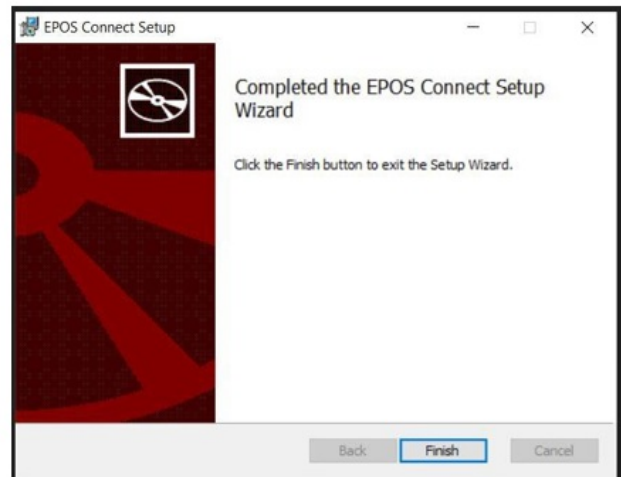
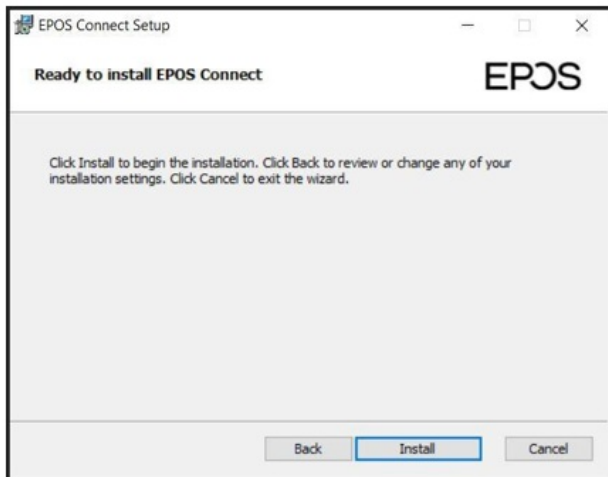
This program allows ONE Web client to interact with Sennheiser(EPOS) headsets. It enables the interface between ONE Web client and the Sennheiser(EPOS) headsets.

- . Windows : EPOS Connect for Windows
- . Mac : EPOS Connect for MAC

Step 2: Set up headset integration settings on iPECS ONE Web Client

- For Windows
 1. Download EPOS Connect for Windows or EPOS Connect for MAC from [EPOS Connect for Sennheiser\(EPOS\) headset](#)
 2. Execute the setup package. Click the "Install" button to install this package. When the "Finish" button is

clicked, all installation processing will be done.



Set up headset integration settings

- Supported Models
- SC130/SC260
- iPECS ONE Settings > Headset Integration
- Click 'Select headset device' and select the Sennheiser(EPOS) headset
- Click Enable

